

## DUAL PLATE CHECK VALVE

- Available in size 50mm (2") to 1200mm (48") and above.
- Valve rating PN 16, PN 20, PN 40, ANSI #125, ANSI #150, ANSI #300 & above
- Positive sealing
- Design standard as per API 594
- Light weight and self supporting
- Double spring action
- Flexible installation including horizontal and vertical
- Low Pressure drop
- Non-slam and no water hammer
- Compact structurally sound design



Pre-Insulated  
Valves  
also  
Available

*Changing the way you think about valves...*

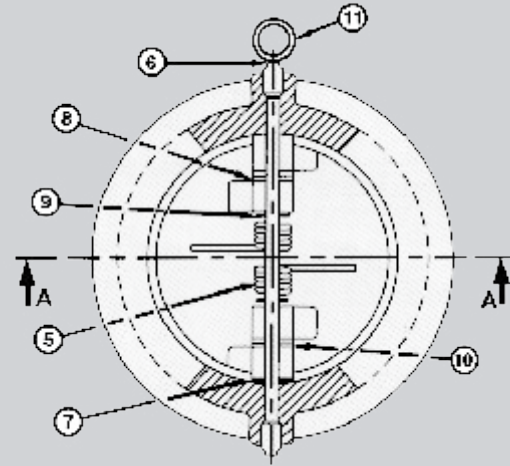
### CONSTRUCTION AND TECHNICAL INFORMATION

For soft seated wafer model - HVAC and water application

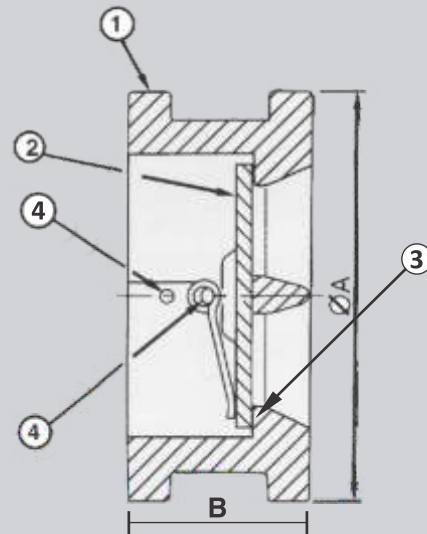
#### PART LIST

(Alternate metallurgies available on request)

Item No.	PART NAME	MATERIAL
1	Body	Cast Iron to IS 210 Gr. FG 260 / Ductile (SG) Iron to IS 1865 Gr. 450/10 / Cast Steel to ASTM A-216 Gr. WCB
2	Plate	ASTM A-217 Gr. CA-15 (SS-410)/CF8M
3	Body Seat	BUNA-N/EPDM (Temp-Rang, -40°C to +120°C)
4	Hinge / Stop Pin	AISI SS 410 / CF8M
5	Spring*	SS-316
6	Retainer	Carbon Steel
7	Body Bearing	AISI SS-316
8	Plate Bearing	AISI SS-316
9	Spring Bearing	AISI SS-316
10	Sleeve #	AISI SS-316
11	Eyebolt **	Steel



ELEVATION



SECTION A-A

#### ANSI Installation Dimensions

Advance Dual Plate Check Valve (WAFER TYPE MODEL AV-WP-11)

SIZE N.B.	ANSI RATING	DIMENSIONS (mm)		Weight (Kgs.)
		** (A)	(B)	
50mm (2")	#125	96	54	1.6
	#150	100	60	2.6
65mm (2.5")	#125	105	60	2.2
	#150	105	67	3.5
80mm (3")	#125	128	67	3.5
	#150	133	73	4.5
100mm (4")	#125	160	67	5.9
	#150	170	73	6.7
125mm (5")	#125	192	83	8.8
	#150	NA	NA	NA
150mm (6")	#125	212	95	12.2
	#150	218	98	16.0
200mm (8")	#125	269	127	23.7
	#150	269	127	26.0
250mm (10")	#125	333	140	31.2
	#150	335	146	40.0
300mm (12")	#125	381	181	58.4
	#150	406	181	78.0
350mm (14")	#125	447	184	90.0
	#150	447	184	100.0
400mm (16")	#125	510	191	117.8
	#150	510	191	125.0
450mm (18")	#125	546	203	130.0
	#150	535	203	143.0
500mm (20")	#125	600	213	170.0
	#150	600	219	197.0
600mm (24")	#125	712	222	250.0
	#150	712	222	281.0

Note :

\* Single Spring upto 125mm (5")

# Sleeve provided only for 450mm (18") and above (independent suspension).

\*\* Eyebolt provided only for 200mm (8") and above.

Flange facing to suit customer spec. Flanged and Lugged models also available, end connection to suit BS-10 Table E / ASME B16.5 as per customer spec.

