

## DATA LOGGERS



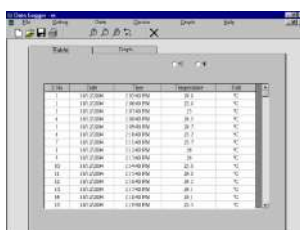
TEMPERATURE DATA LOGGER



TEMPERATURE & RH DATA LOGGER

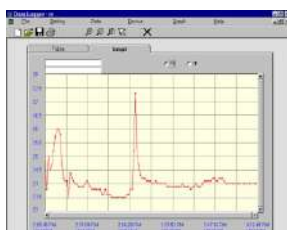


PC INTERFACE CABLE



Date	Time	Temperature	RH
10/1/2009	10:00 PM	20.2	75
10/1/2009	10:05 PM	20.2	75
10/1/2009	10:10 PM	20.2	75
10/1/2009	10:15 PM	20.2	75
10/1/2009	10:20 PM	20.2	75
10/1/2009	10:25 PM	20.2	75
10/1/2009	10:30 PM	20.2	75
10/1/2009	10:35 PM	20.2	75
10/1/2009	10:40 PM	20.2	75
10/1/2009	10:45 PM	20.2	75
10/1/2009	10:50 PM	20.2	75
10/1/2009	10:55 PM	20.2	75
10/1/2009	11:00 PM	20.2	75
10/1/2009	11:05 PM	20.2	75
10/1/2009	11:10 PM	20.2	75
10/1/2009	11:15 PM	20.2	75
10/1/2009	11:20 PM	20.2	75
10/1/2009	11:25 PM	20.2	75
10/1/2009	11:30 PM	20.2	75
10/1/2009	11:35 PM	20.2	75
10/1/2009	11:40 PM	20.2	75
10/1/2009	11:45 PM	20.2	75
10/1/2009	11:50 PM	20.2	75
10/1/2009	11:55 PM	20.2	75
10/1/2009	12:00 AM	20.2	75

DATA TABLE



GRAPHICAL DATA

### FEATURES

- Wide range - temperature, RH, voltage, event
- Small size, portable, low cost
- On-line and Off-line modes of operation
- Built-in clock
- Stand-alone, long operational life
- Re-usable device, replaceable battery
- Programmable start/stop time and recording interval
- Non-volatile solid state memory up to 16 K sample point storage capacity
- Easy and instant connection to PC with interface for programming and data download
- Easy to set up windows based software package
- Analysis of data in tabular and graphical format and export to spreadsheet/ word processing programs
- Zoom in facility
- Log, store, retrieve, share, transfer and print data.

### BENEFITS

- Rugged, maintenance free, long life
- User friendly, easy to program
- Data retention even in case of battery failure/replacement
- Easy data sharing and transfer
- Simplified record keeping
- Replaces cumbersome and costly strip-chart recorders

## TECHNICAL DATA

Housing material	:	PP / ABS
Size	:	5.5 x 3.5 x 1.8 cms
Weight	:	30 gms
Temperature	:	(-)30 - 70° C with ±1° C accuracy (respective figures for °F)
Relative Humidity	:	0-100% with ±3% accuracy
Voltage	:	0-10 Vdc from a transmitter
Event	:	Pulse width of 100 microseconds or more
Battery	:	3 V lithium button cell (CR2430)
PC requirements	H/w :	Minimum P II or equivalent processor with 32 MB RAM and 64 MB free disk space. One free USB port
	O/s :	Windows 98 upwards
Sample rate/interval	:	Adjustable between 2 seconds to 24 hours
Maximum no. of readings	:	16 K
Maximum memory size	:	32 K
Resolution	:	10 bit